

**Revision**

**A**

# SMARTPOWER 50 - WIFI SETUP

---

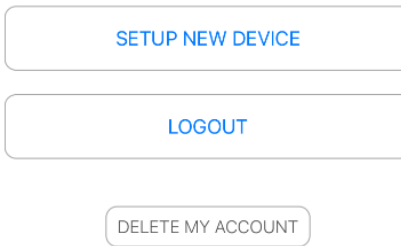
Power Supply Control App

Apple User Guide

# App Navigation

## Using the App

The app has three action buttons located towards the bottom of the app. They are labeled 'Setup New Device', 'Logout', and 'Delete My Account'. The 'Setup New Device' button is used for the primary function of the app – Provisioning WiFi for SmartPower50 Devices.



## Closing and Clearing the App

Swipe up from the bottom of the screen to close the app. For devices with a 'Home' button, press the home button once to close the app. To clear the app, slide up from the bottom and pause at the middle of the screen, and swipe up on the app's preview. For devices with a 'Home' button, double tap the Home button and swipe up on the app's preview to clear.

# Wi-Fi Provisioning

## Initial App Start-up and Account

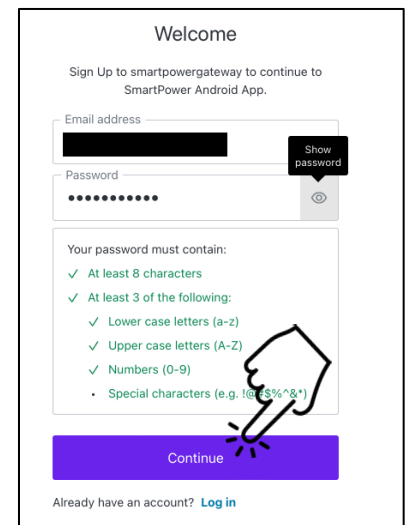
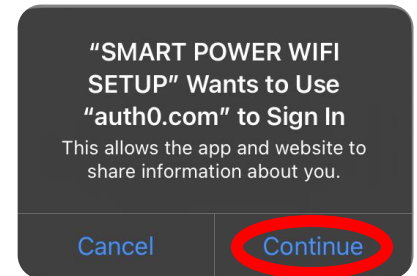
When the app is opened, it gives the option to Setup a New Device.

The setup procedure is as follows:

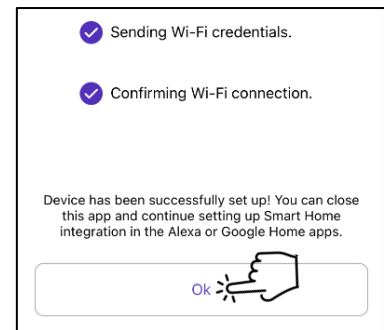
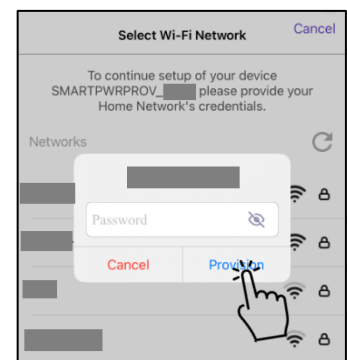
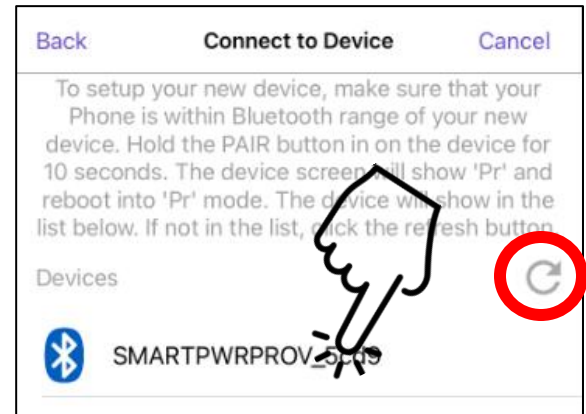
- Open the app and **press the ‘Setup New Device’ Button** on the app’s screen.
- A pop-up reading ‘ “SMART POWER WIFI SETUP” Wants to Use “auth0.com” to Sign In’ will appear. **Press ‘Continue’** to Log In/ Sign Up.
- A web browser will open a page allowing the user to Login to an existing Smart Power Gateway account, or sign up for an account. New users will need to register by **clicking ‘Sign up’**, next to “Don’t have an account?”. Existing users will need to enter email and password to log in to their account.
- The Account Creation screen requires users to **register their email address and create a password**. Password limitations will be listed on the screen. Once registered with a valid email and password, user will need to **click ‘Continue’** to create the account.

## Connecting To and Provisioning a Device

Once a Smart Power Gateway account is established and Logged In, the app will navigate to the ‘Connect to Device’ screen and the user can begin provisioning a Smart Power 50 device.



- Ensure phone and SmartPower50 device are within Bluetooth range of each other and range from the desired WiFi router. **Press and hold the ‘Pair’ button** on the SmartPower50 device for 10 seconds. **The device will reboot and display ‘Pr’** if successful.
- An icon displaying ‘SMARTPWRPROV\_XXXX’ will appear under the ‘Devices’ section of the page. If no device appears, **refresh devices** on the ‘Connect to Device’ screen using the throbber on the right side of the screen. **Click on the device** you wish to provision.
- The app will begin scanning for available Wi-Fi Networks. Once the desired network appears, **select the network** and **enter the password**, if necessary. Once the correct password is entered, **click ‘Provision’**. If the desired network does not appear, ensure your router is within range and is broadcasting a 2.4G Wi-Fi signal.
- The app will send and confirm the entered Wi-Fi credentials. Once the device is successfully set up, a dialog will pop up informing the user. Once Wi-Fi connection is confirmed, **click ‘Ok’**. The app will notify user if there is a Wi-Fi authentication error, in which case user will need to repeat Connecting to Provisioning Device steps, ensuring the correct WiFi network and password are being used.



Once the SmartPower50 device is successfully connected to the desired Wi-Fi network, leave the device plugged in to install any potential updates (device may restart during update process). The device is now ready for Smart Home integration, and will display a decimal point/period after each digit/letter on the device’s display.

# Log Out or Delete Smart Power Gateway Account

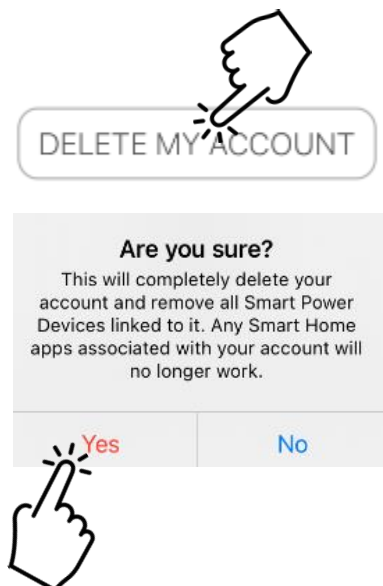
## Logging Out

If users choose to Log Out of their Smart Power Gateway account, they must open the app and select 'Logout' at the bottom of the screen. Logging out of the app will not allow a user to provision a device unless they log in again.



## Deleting An Account

If users choose to delete their Smart Power Gateway account, any Smart Home integrations with a Smart Power 50 device will be forgotten. Deleting an account is an irreversible action. To delete a Smart Power Gateway account, click the 'Delete My Account' action button and confirm 'Yes' in the pop-up message.



## Closing and Clearing the App

Swipe up from the bottom of the screen to close the app. For devices with a 'Home' button, press the home button once to close the app. To clear the app, slide up from the bottom and pause at the middle of the screen, and swipe up on the app's preview. For devices with a 'Home' button, double tap the Home button and swipe up on the app's preview to clear.