

Revision

A

SMARTPOWER 50 SMART HOME INTEGRATION

Google Home Integration Guide

Google Home Integration

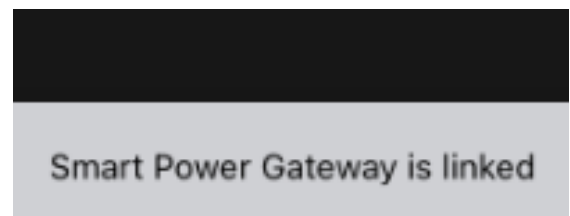
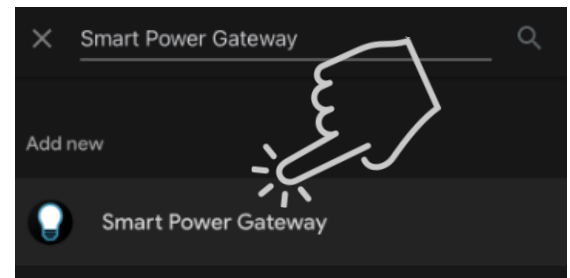
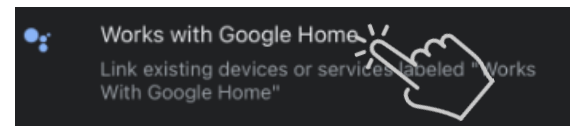
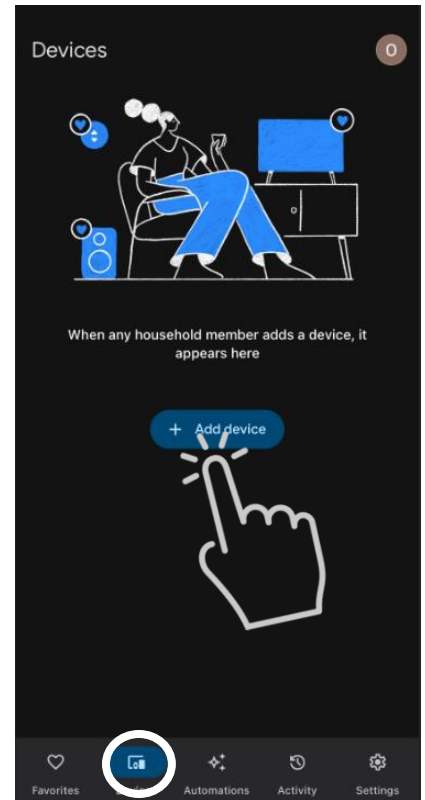
Before You Integrate

Prior to establishing Google Home integration, ensure your SmartPower50 device is successfully provisioned to Wi-Fi, and there is an active Smart Power Gateway account linked, users will need to use the same credentials to sign in during integration. The device should display a period/dot after both digits on the display.

Add Smart Power Gateway

To integrate with Google Home, you must first sign in and link your ‘Smart Power Gateway’ account.

- **Open the Google Home app** and navigate to the ‘Devices’ tab at the bottom of the screen, and select ‘Add Device’ Pick ‘Works with Google Home’ in the Choose a device screen.
- **Search** for ‘Smart Power Gateway’ using the search bar. **Select** the option that matches your search.
- User will be prompted to link their existing Smart Power Gateway account (used during provisioning). Log in to the account and select ‘Continue’.
- The Google Home app will notify users when the account has been successfully linked. Any deletion or logging out of the Smart Power Gateway account will result in loss of Google Home integration and will need re-linked before future use.

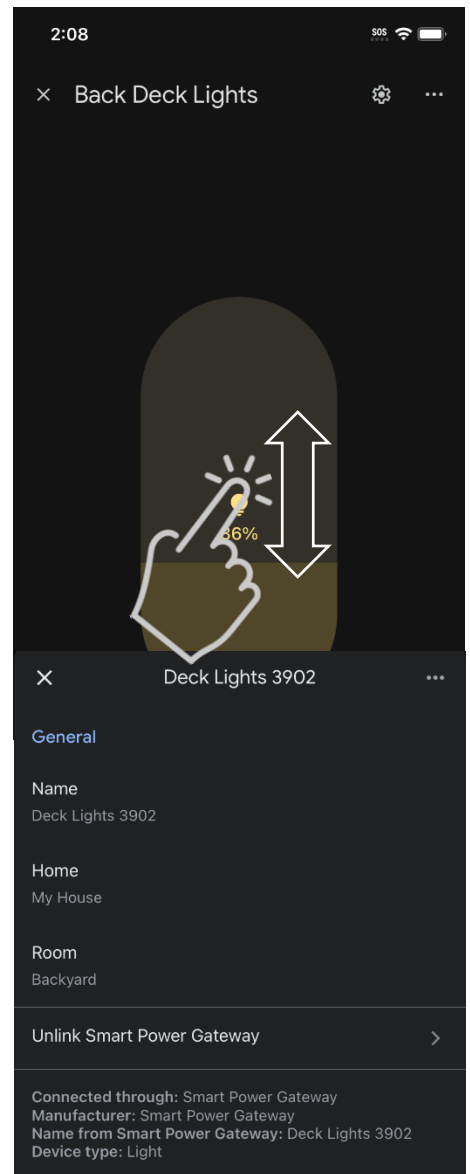
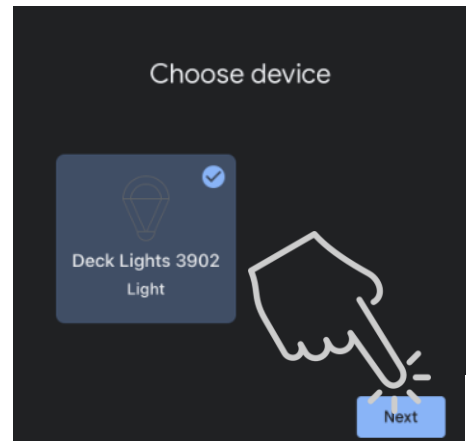


Setup & Use Smart Power Devices

- The device is ready to set up. Select the Smart Power 50 device if you desire to add to Google Home, and click 'Next'. Choose the home you would like to control the device in and click 'Next'. Select a location/room that the device will be located (i.e., Backyard) and click 'Next'.
- To control a device via the app, select the Smart Power 50 device on the 'Devices' screen. A screen with a slider showing power status and brightness percentage will appear. If the slider appears yellow, the lights are on.
- Press on the slider on the screen to control power On/Off functions. Use the slider bar to adjust brightness percentage by sliding up or down.
- The settings gear on the status screen allows users to rename the device. It is recommended to record or keep the 4-digit identifier from the original name.

Removing Devices

- To delete a device via the Google Home app, click the gear icon in the top right corner. Click 'Unlink Smart Power Gateway' and confirm 'Unlink' on the pop-up message. Select the Smart Power Gateway service and click 'Unlink' on the pop-up message., understanding the device will be removed from all groups also. Users will need to repeat 'Adding a Smart Power Device' steps if they intend future use of the device with Google Home.
- To delete the device from Google Home AND a user's Smart Power Gateway account, user can go to mqtt.decklighthelp.com, sign into the Smart Power Gateway account associated with the device, and



delete the device (user will need to know 4 digit identifier if using multiple devices under the same account). User may also delete their Smart Power Gateway account via the same website.

Voice Command Examples

- To control the Smart Power 50 device with voice commands, users can say commands like:

“*Hey Google*, turn on my Deck Lights (if device is renamed to ‘Deck Lights’)”

“*OK Google*, set my deck lights to 50% brightness”

“*Hey Google*, turn on my deck lights at dusk”

“*Okay, Google*, dim my deck lights to 75%”